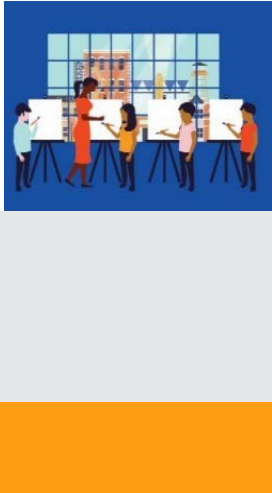




The National Endowment for the Arts is the only funder, public or private, that supports the arts in all **50 States** in the United States.

In the past 5 years... The National Endowment for the Arts distributed more than **\$3,927,300** in grants in **Arizona**.



In one year alone...

- Arts and cultural production in Arizona added **3.0%**, or **\$9.3 billion** to the state's economy.
- Arizona's arts and cultural industries employ **91,878** workers. These workers earn wages and benefits totaling **\$4.9 billion**.
- **27.9%** of Arizona's adults attended live music, theater, or dance performances, while **20.0%** attended art exhibits.

National Endowment for the Arts Programs from FY16-FY18

The **Blue Star Museums** program provided free admission to thousands of active military personnel and their families at **102 participating museums** in Arizona.

The **Poetry Out Loud** is a national competition which develops communication skills, presence, and confidence through the study, memorization, and public recitation of poetry. In Arizona, over **23,930 students** participated from among **140** high schools.

The **Big Read** program generated **57** community events focused on reading outstanding American literature and involving more than **17,300** adults and students in Arizona.

The **Shakespeare in American Communities** program enabled schools to offer children the opportunity to see free live professional performances of Shakespeare.

The **Creative Forces** program is expanding access to creative arts therapies and arts engagement opportunities for injured service members, veterans, and their families and caregivers.



2019 Agency Calendar of Events

Blue Star Museums: Armed Forces Day (5/18) - Labor Day (9/2)

June Meeting of the National Council on the Arts: 6/19-6/21

National Book Festival: 8/31

National Heritage Fellows Awards & Concert: 9/18-9/20

October Meeting of the National Council on the Arts: 10/24-10/25





NOTEWORTHY

Examples of Schools & Organizations Receiving Past Endowment Support Include:

AZ-1

*Gila Valley Arts Council
Flagstaff High School
St. Michaels Historical Museum
White Mountain Apache Tribe*

AZ-4

*Phippen Museum
Basis Prescott
Phoenix Theatre
Yavapai College*

AZ-7

*North High School
Ballet Arizona
Heard Museum
Phoenix Police Museum*

AZ-2

*Amerind Museum
Ft. Lowell Museum
Loft Cinema
Tohono Chul*

AZ-5

*Arizona Railway Museum
Highland High School
Perry High School
SW Shakespeare Company*

AZ-8

*Willow Canyon High School
West Valley Arts Council
City of Litchfield Park
West Valley Symphony*

AZ-3

*Arizona State Museum
Kore Press
La Frontera Center
Yoemem Tekia Foundation*

AZ-6

*Horizon High School
Red Rocks Music Festival
Scottsdale Cultural Council
Mohave*

AZ-9

*Act One
City of Mesa
Phoenix Boys Choir
Phoenix Day School for the Deaf*

Your State Arts Agency: Arizona Commission On The Arts

Director: Jaime Dempsey

Phone: 602-771-6501

Email: info@azarts.gov

