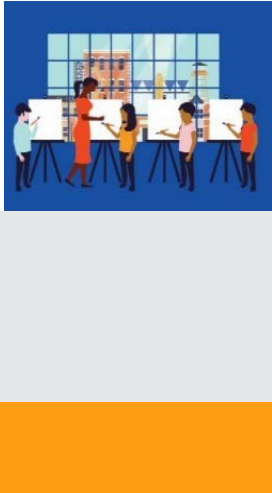




The National Endowment for the Arts is the only funder, public or private, that supports the arts in all **50 States** in the United States.

In the past 5 years... The National Endowment for the Arts distributed more than **\$2,404,800** in grants in **Delaware**.



In one year alone...

- Arts and cultural production in Delaware added **1.5%**, or **\$1.0 billion** to the state's economy.
- Delaware's arts and cultural industries employ **9,124** workers. These workers earn wages and benefits totaling **\$0.5 billion**.
- **33.6%** of Delaware's adults attended live music, theater, or dance performances, while **17.5%** attended art exhibits.

National Endowment for the Arts Programs from FY16-FY18

The **Blue Star Museums** program provided free admission to thousands of active military personnel and their families at **42 participating museums** in Delaware.

The **Poetry Out Loud** is a national competition which develops communication skills, presence, and confidence through the study, memorization, and public recitation of poetry. In Delaware, over **3,630 students** participated from among **60** high schools.

The **Big Read** program generated dynamic community reading programs, each designed around outstanding American literature.

The **Shakespeare in American Communities** program enabled schools to offer children the opportunity to see free live professional performances of Shakespeare.

The **Creative Forces** program is expanding access to creative arts therapies and arts engagement opportunities for injured service members, veterans, and their families and caregivers.



2019 Agency Calendar of Events

Blue Star Museums: Armed Forces Day (5/18) - Labor Day (9/2)

June Meeting of the National Council on the Arts: 6/19-6/21

National Book Festival: 8/31

National Heritage Fellows Awards & Concert: 9/18-9/20

October Meeting of the National Council on the Arts: 10/24-10/25





NOTEWORTHY

Examples of Schools & Organizations Receiving Past Endowment Support Include:

- | | |
|--|---|
| <i>African American Heritage</i> | <i>Hagley Museum and Library</i> |
| <i>Art Therapy Express</i> | <i>Hanlin Chinese Culture Association</i> |
| <i>Biggs Museum of American Art</i> | <i>Highlands Elementary School</i> |
| <i>Brandywine High School</i> | <i>John Dickinson Plantation</i> |
| <i>Arts Camp Rehoboth</i> | <i>Lewes Public Library</i> |
| <i>Caravel Academy</i> | <i>Mid-Atlantic Ballet Academy</i> |
| <i>Cathedral Choir School of Delaware</i> | <i>Ministry of Caring</i> |
| <i>Coastal Concerts</i> | <i>Music School of Delaware</i> |
| <i>Library DE Art Museum</i> | <i>New Castle Court House</i> |
| <i>Delaware Children's Theatre</i> | <i>Opera Delaware</i> |
| <i>DE Division of Parks and Recreation</i> | <i>Polytech High School</i> |
| <i>DE Shakespeare Festival</i> | <i>Red Lion Christian Academy</i> |
| <i>Delaware Historical Society</i> | <i>Rehoboth Beach Film Society</i> |
| <i>Delmar Public Library</i> | <i>Rockwood Museum and Park</i> |
| <i>Dover Art League</i> | <i>Schwartz Center for the Arts</i> |
| <i>El Centro Cultural</i> | <i>Smyrna Opera House</i> |
| <i>First State Harmonizers</i> | <i>Tall Oaks Classical School</i> |
| <i>Friends of the Capitol Theater</i> | <i>Ursuline Academy</i> |
| <i>Gateway Lab School</i> | <i>Wesley College</i> |
| | <i>YMCA of Delaware</i> |
| | <i>Wilmington Wintergrass</i> |

Your State Arts Agency: Delaware Division Of The Arts

Director: Paul Weagraff

Phone: 302-577-8278

Email: delarts@delaware.gov

