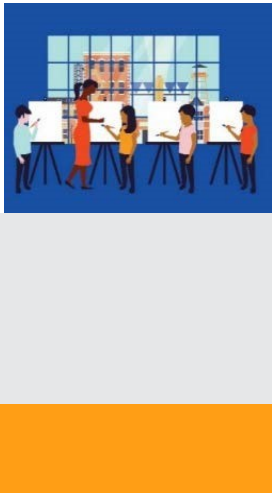




The National Endowment for the Arts is the only funder, public or private, that supports the arts in all **50 States** in the United States.

In the past 5 years... The National Endowment for the Arts distributed more than **\$2,071,300** in grants in **Hawaii**.



In one year alone...

- Arts and cultural production in Hawaii added **3.0%**, or **\$2.6 billion** to the state's economy.
- Hawaii's arts and cultural industries employ **22,742** workers. These workers earn wages and benefits totaling **\$1.4 billion**.
- **29.2%** of Hawaii's adults attended live music, theater, or dance performances, while **20.5%** attended art exhibits.

National Endowment for the Arts Programs from FY16-FY18

The **Blue Star Museums** program provided free admission to thousands of active military personnel and their families at **18 participating museums** in Hawaii.

The **Poetry Out Loud** is a national competition which develops communication skills, presence, and confidence through the study, memorization, and public recitation of poetry. In Hawaii, over **2,540 students** participated from among **43** high schools.

The **Big Read** program generated dynamic community reading programs, each designed around outstanding American literature.

The **Shakespeare in American Communities** program enabled schools to offer children the opportunity to see free live professional performances of Shakespeare.

The **Creative Forces** program is expanding access to creative arts therapies and arts engagement opportunities for injured service members, veterans, and their families and caregivers.



2019 Agency Calendar of Events

Blue Star Museums: Armed Forces Day (5/18) - Labor Day (9/2)

June Meeting of the National Council on the Arts: 6/19-6/21

National Book Festival: 8/31

National Heritage Fellows Awards & Concert: 9/18-9/20

October Meeting of the National Council on the Arts: 10/24-10/25





NOTEWORTHY

Examples of Schools & Organizations Receiving Past Endowment Support Include:

HI-1

- Taiko Arts Center*
- Hawaii Lion Dance Association*
- Honolulu Museum of Art*
- Lolani Palace*
- Lutheran High School of Hawaii*
- Ballet Hawaii*
- Hawaii Craftsmen*
- Kaimuki Christian School*
- Japanese Cultural Center of Hawaii*
- Mana Maoli*
- Bamboo Ridge Press*
- Hawaii Opera Theatre*
- Punahou School*
- Lutheran High School of Hawaii*
- Mid-Pac Institute*
- Moanalua Gardens Foundation*

HI-2

- Heritage Ranch*
- Kamehameha Schools Maui*
- Lanai High School*
- Hula Preservation Society*
- Aloha Performing Arts Company*
- Early Music Hawaii*
- Hawaii Concert Society*
- Hi'ipaka LLC*
- Ka'u Concert Society*
- Kahilu Theatre Foundation*
- Lyman Museum*
- Parker School*
- Kauai Christian Academy*
- University of Hawaii - Hilo*
- Le Jardin Academy*
- West Hawaii Dance Theatre*

**Your State Arts Agency: Hawai'i State Foundation On Culture
And The Arts**

Director: Jonathan Johnson

Phone: 808-586-0300

