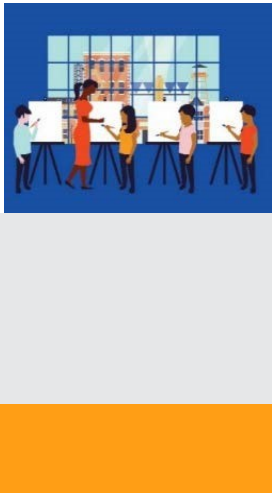




The National Endowment for the Arts is the only funder, public or private, that supports the arts in all **50 States** in the United States.

**In the past 5 years...** The National Endowment for the Arts distributed more than **\$2,071,300** in grants in **Hawaii**.



In one year alone...

- Arts and cultural production in Hawaii added **3.0%**, or **\$2.6 billion** to the state's economy.
- Hawaii's arts and cultural industries employ **22,742** workers. These workers earn wages and benefits totaling **\$1.4 billion**.
- **29.2%** of Hawaii's adults attended live music, theater, or dance performances, while **20.5%** attended art exhibits.

### National Endowment for the Arts Programs from FY16-FY18

The **Blue Star Museums** program provided free admission to thousands of active military personnel and their families at **18 participating museums** in Hawaii.

The **Poetry Out Loud** is a national competition which develops communication skills, presence, and confidence through the study, memorization, and public recitation of poetry. In Hawaii, over **2,540 students** participated from among **43** high schools.

The **Big Read** program generated dynamic community reading programs, each designed around outstanding American literature.

The **Shakespeare in American Communities** program enabled schools to offer children the opportunity to see free live professional performances of Shakespeare.

The **Creative Forces** program is expanding access to creative arts therapies and arts engagement opportunities for injured service members, veterans, and their families and caregivers.



### 2019 Agency Calendar of Events

**Blue Star Museums: Armed Forces Day (5/18) - Labor Day (9/2)**

**June Meeting of the National Council on the Arts: 6/19-6/21**

**National Book Festival: 8/31**

**National Heritage Fellows Awards & Concert: 9/18-9/20**

**October Meeting of the National Council on the Arts: 10/24-10/25**





NOTEWORTHY

**Examples of Schools & Organizations Receiving Past Endowment Support Include:**

**HI-1**

*Taiko Arts Center*  
*Hawaii Lion Dance Association*  
*Honolulu Museum of Art*  
*Iolani Palace*  
*Lutheran High School of Hawaii*  
*Ballet Hawaii*  
*Hawaii Craftsmen*  
*Kaimuki Christian School*  
*Japanese Cultural Center of Hawaii*  
*Mana Maoli*  
*Bamboo Ridge Press*  
*Hawaii Opera Theatre*  
*Punahou School*  
*Lutheran High School of Hawaii*  
*Mid-Pac Institute*  
*Moanalua Gardens Foundation*

**HI-2**

*Heritage Ranch*  
*Kamehameha Schools Maui*  
*Lanai High School*  
*Hula Preservation Society*  
*Aloha Performing Arts Company*  
*Early Music Hawaii*  
*Hawaii Concert Society*  
*Hi'ipaka LLC*  
*Ka'u Concert Society*  
*Kahilu Theatre Foundation*  
*Lyman Museum*  
*Parker School*  
*Kauai Christian Academy*  
*University of Hawaii - Hilo*  
*Le Jardin Academy*  
*West Hawaii Dance Theatre*

**Your State Arts Agency: Hawai'i State Foundation On Culture  
And The Arts**

Director: Jonathan Johnson

Phone: 808-586-0300

