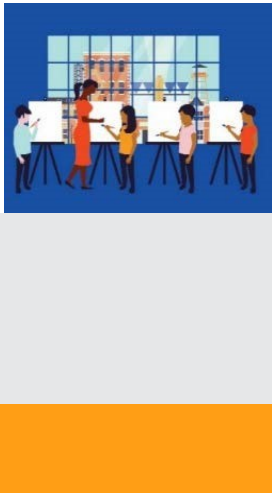




The National Endowment for the Arts is the only funder, public or private, that supports the arts in all **50 States** in the United States.

In the past 5 years... The National Endowment for the Arts distributed more than **\$16,885,400** in grants in **Illinois**.



In one year alone...

- Arts and cultural production in Illinois added **3.4%**, or **\$27.2 billion** to the state's economy.
- Illinois's arts and cultural industries employ **211,192** workers. These workers earn wages and benefits totaling **\$14.5 billion**.
- **34.7%** of Illinois's adults attended live music, theater, or dance performances, while **15.3%** attended art exhibits.

National Endowment for the Arts Programs from FY16-FY18

The **Blue Star Museums** program provided free admission to thousands of active military personnel and their families at **237 participating museums** in Illinois.

The **Poetry Out Loud** is a national competition which develops communication skills, presence, and confidence through the study, memorization, and public recitation of poetry. In Illinois, over **24,870 students** participated from among **142** high schools.

The **Big Read** program generated **622** community events focused on reading outstanding American literature and involving more than **26,880** adults and students in Illinois.

The **Shakespeare in American Communities** program enabled schools in Illinois to offer **21,800** children the opportunity to see free live professional performances of Shakespeare.

The **Creative Forces** program is expanding access to creative arts therapies and arts engagement opportunities for injured service members, veterans, and their families and caregivers.



2019 Agency Calendar of Events

Blue Star Museums: Armed Forces Day (5/18) - Labor Day (9/2)

June Meeting of the National Council on the Arts: 6/19-6/21

National Book Festival: 8/31

National Heritage Fellows Awards & Concert: 9/18-9/20

October Meeting of the National Council on the Arts: 10/24-10/25





NOTEWORTHY

Examples of Schools & Organizations Receiving Past Endowment Support Include:

IL-1

*Hyde Park Jazz Festival
Pegasus Theatre
Smart Museum of Art*

IL-2

*Bronzeville Children's Museum
Union Street Gallery
Skyart NFP*

IL-3

*Beverly Arts Center
Project Onward
McCord House*

IL-4

*Riverside Arts Center
Curie High School
Dominican University*

IL-5

*Links Hall
Taft High School
Chicago A Cappella*

IL-6

*Gregg House Museum
Cantigny Park
North Central College*

IL-7

*Free Street Theater
Joffrey Ballet
Gillourey Institute*

IL-8

*Elgin Youth Symphony
Addison Center for the Arts
Artreach Education Theatre*

IL-9

*Kuumba Lynx
Neo-Futurists
Swedish American Museum*

IL-10

*Waukegan Public Library
Jazz Education Network
Ragdale Foundation*

IL-11

*Scitech Hands on Museum
Napier Settlement
Aurora University*

IL-12

*Gibault Catholic High School
Masterwork Chorale
Sparta High School*

IL-13

*Spurlock Museum
McClellan County Art Association
Bloomington, IL*

IL-14

*Air Classics Museum
St. Charles Singers
Covenant Classical School*

IL-15

*Clay City High School
Vermilion County War Museum
Highland Area Arts Council*

IL-16

*Dekalb Public Library
Sugar Creek Opera
Reddick Mansion*

IL-17

*Ballet Quad Cities
The Orpheum Theatre
Rock Island Arsenal Museum*

IL-18

*Eastlight Theatre
Peoria Players Theatre
Whells O'Time Museum*

Your State Arts Agency: Illinois Arts Council Agency

Director: Joshua Davis

Phone: 312-814-6750

Email: iac.info@illinois.gov

