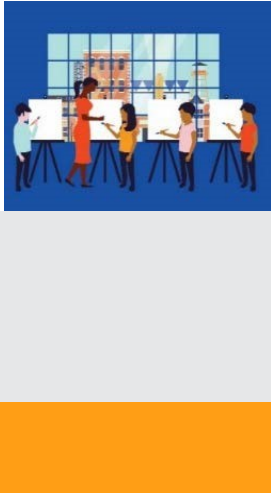




The National Endowment for the Arts is the only funder, public or private, that supports the arts in all **50 States** in the United States.

In the past 5 years... The National Endowment for the Arts distributed more than **\$4,876,500** in grants in **Kentucky**.



In one year alone...

- Arts and cultural production in Kentucky added **2.5%**, or **\$4.9 billion** to the state's economy.
- Kentucky's arts and cultural industries employ **52,978** workers. These workers earn wages and benefits totaling **\$2.7 billion**.
- **29.5%** of Kentucky's adults attended live music, theater, or dance performances, while **11.6%** attended art exhibits.

National Endowment for the Arts Programs from FY16-FY18

The **Blue Star Museums** program provided free admission to thousands of active military personnel and their families at **40 participating museums** in Kentucky.

The **Poetry Out Loud** is a national competition which develops communication skills, presence, and confidence through the study, memorization, and public recitation of poetry. In Kentucky, over **11,460 students** participated from among **59** high schools.

The **Big Read** program generated **270** community events focused on reading outstanding American literature and involving more than **30,960** adults and students in Kentucky.

The **Shakespeare in American Communities** program enabled schools in Kentucky to offer **29,100** children the opportunity to see free live professional performances of Shakespeare.

The **Creative Forces** program is expanding access to creative arts therapies and arts engagement opportunities for injured service members, veterans, and their families and caregivers.



2019 Agency Calendar of Events

Blue Star Museums: Armed Forces Day (5/18) - Labor Day (9/2)

June Meeting of the National Council on the Arts: 6/19-6/21

National Book Festival: 8/31

National Heritage Fellows Awards & Concert: 9/18-9/20

October Meeting of the National Council on the Arts: 10/24-10/25





NOTEWORTHY

Examples of Schools & Organizations Receiving Past Endowment Support Include:

KY-1

City of Paducah
Janice Mason Art Museum
Madisonville Community College
Ohio Valley Art League
Murray Art Guild
Yeiser Art Center

KY-4

Covington Ladies Home
Kincaid Regional Theatre
Kentucky Gateway Museum Center
Owen County Public Library
Boyd County Public Library
Behringer-Crawford Museum

KY-2

Orchestra Kentucky
Centre College
Owensboro Symphony
International Bluegrass Music Museum
Fine Arts Bardstown Society
Pioneer Playhouse

KY-5

Appalshop
Kentucky Music Hall of Fame and Museum
Pikeville High School
East Kentucky Science Center
Kentucky Native American Heritage Museum
East Kentucky Science Center

KY-3

Frazier History Museum
Muhammad Ali Center
Louisville Youth Orchestra
council on Developmental Disabilities
Bourbon Baroque
Muhammad Ali Center

KY-6

Appalachian Heritage Alliance
UK Healthcare
Kentucky Historical Society
Central Kentucky Youth Orchestra
Appalachian Heritage Alliance
Muhammad Ali Center

Your State Arts Agency: Kentucky Arts Council

Director: Chris Cathers
 Phone: 502-564-3757 Email:
 kyarts@ky.gov

