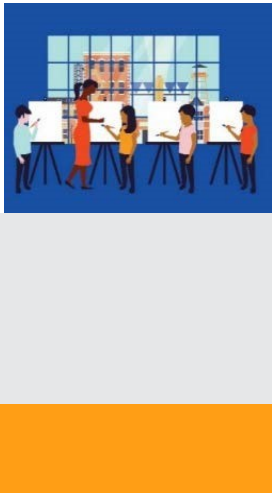




The National Endowment for the Arts is the only funder, public or private, that supports the arts in all **50 States** in the United States.

**In the past 5 years...** The National Endowment for the Arts distributed more than **\$6,343,500** in grants in **Louisiana**.



In one year alone...

- Arts and cultural production in Louisiana added **2.9%**, or **\$6.7 billion** to the state's economy.
- Louisiana's arts and cultural industries employ **54,968** workers. These workers earn wages and benefits totaling **\$2.8 billion**.
- **25.3%** of Louisiana's adults attended live music, theater, or dance performances, while **10.7%** attended art exhibits.

### National Endowment for the Arts Programs from FY16-FY18

The **Blue Star Museums** program provided free admission to thousands of active military personnel and their families at **62 participating museums** in Louisiana.

The **Poetry Out Loud** is a national competition which develops communication skills, presence, and confidence through the study, memorization, and public recitation of poetry. In Louisiana, over **1,300 students** participated from among **92** high schools.

The **Big Read** program generated **26** community events focused on reading outstanding American literature and involving more than **3,490** adults and students in Louisiana.

The **Shakespeare in American Communities** program enabled schools in Louisiana to offer **3,500** children the opportunity to see free live professional performances of Shakespeare.

The **Creative Forces** program is expanding access to creative arts therapies and arts engagement opportunities for injured service members, veterans, and their families and caregivers.



### 2019 Agency Calendar of Events

**Blue Star Museums: Armed Forces Day (5/18) - Labor Day (9/2)**

**June Meeting of the National Council on the Arts: 6/19-6/21**

**National Book Festival: 8/31**

**National Heritage Fellows Awards & Concert: 9/18-9/20**

**October Meeting of the National Council on the Arts: 10/24-10/25**





NOTEWORTHY

## Examples of Schools & Organizations Receiving Past Endowment Support Include:

### LA-1

*City of Slidell*  
*Lakeshore High School*  
*St. Paul's School*  
*New Orleans Chapter of American Harp Society*  
*Pope John Paul II High School*  
*Lighthouse Museum*

### LA-2

*New Orleans Ballet Association*  
*Gallier House*  
*Artsport Productions*  
*Gulf Restoration Network*  
*New Orleans Jazz Orchestra*  
*Goat in the Road Productions*

### LA-3

*City of Lake Charles*  
*Houma Regional Arts Council*  
*Zigler Art Museum*  
*Louisiana Folk Roots*  
*Bayou Teche Museum*  
*Cite Des Arts*

### LA-4

*Bossier Arts Council*  
*Red River Revel*  
*The Strang Theatre*  
*Vernon Arts Council*  
*Shreveport Metropolitan Ballet*  
*The Strand Theatre*

### LA-5

*Monroe Symphony Orchestra*  
*Twin City Art Foundation*  
*Neville High School*  
*Prince Theatre*  
*Lincoln Parish Library*  
*Dixie Center for the Arts*

### LA-6

*Zachary High School*  
*West Baton Rouge Museum*  
*Louisiana Art and Science Museum*  
*Louisiana's Old State Capitol Foundation*  
*Houma Regional Arts Council*  
*Nicholls State University*

## Your State Arts Agency: Louisiana Division Of The Arts

Director: Cheryl Castille

Phone: 225-342-8180

Email: [arts@crt.la.gov](mailto:arts@crt.la.gov)

