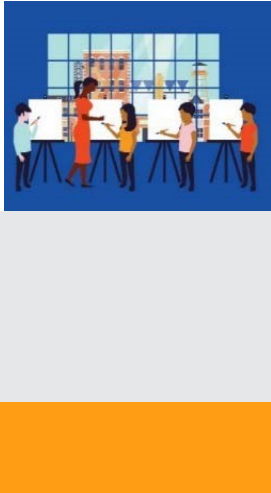




The National Endowment for the Arts is the only funder, public or private, that supports the arts in all **50 States** in the United States.

**In the past 5 years...** The National Endowment for the Arts distributed more than **\$18,477,400** in grants in **Minnesota**.



In one year alone...

- Arts and cultural production in Minnesota added **3.6%**, or **\$12.1 billion** to the state's economy.
- Minnesota's arts and cultural industries employ **99,143** workers. These workers earn wages and benefits totaling **\$6.5 billion**.
- **40.5%** of Minnesota's adults attended live music, theater, or dance performances, while **22.6%** attended art exhibits.

**National Endowment for the Arts Programs from FY16-FY18**

The **Blue Star Museums** program provided free admission to thousands of active military personnel and their families at **90 participating museums** in Minnesota.

The **Poetry Out Loud** is a national competition which develops communication skills, presence, and confidence through the study, memorization, and public recitation of poetry. In Minnesota, over **7,240 students** participated from among **94** high schools.

The **Big Read** program generated **152** community events focused on reading outstanding American literature and involving more than **5,380** adults and students in Minnesota.

The **Shakespeare in American Communities** program enabled schools in Minnesota to offer **40,300** children the opportunity to see free live professional performances of Shakespeare.

The **Creative Forces** program is expanding access to creative arts therapies and arts engagement opportunities for injured service members, veterans, and their families and caregivers.



**2019 Agency Calendar of Events**

**Blue Star Museums: Armed Forces Day (5/18) - Labor Day (9/2)**

**June Meeting of the National Council on the Arts: 6/19-6/21**

**National Book Festival: 8/31**

**National Heritage Fellows Awards & Concert: 9/18-9/20**

**October Meeting of the National Council on the Arts: 10/24-10/25**





## NOTEWORTHY

### Examples of Schools & Organizations Receiving Past Endowment Support Include:

#### MN-1

*Mower County Historical Society*  
*Lighthouse Christian Academy*  
*Rochester Art Center*

#### MN-2

*Eastview High School*  
*St. Olaf College*  
*Vintage Band Music Festival*

#### MN-3

*City of Eden Prairie*  
*Minnetonka Center for the Arts*  
*Bloomington Theatre & Arts Center*

#### MN-4

*Great River School*  
*Hot Summer Jazz Festival*  
*St. Catherine University*

#### MN-5

*Bell Museum of Natural History*  
*Northern Clay Center*  
*Washburn High School*

#### MN-6

*St. John's University*  
*Chamber Music Society of St. Cloud*  
*Forest Lake High School*

#### MN-7

*Red Lake Middle School*  
*Kelliher School*  
*Nordic Culture Clubs*

#### MN-8

*Reif Arts Council*  
*Lakes Area Music Festival*  
*Milaca High School*

### Your State Arts Agency: **Minnesota State Arts Board**

Director: Sue Gens

Phone: 651-539-2650

Email: [msab@arts.state.mn.us](mailto:msab@arts.state.mn.us)

