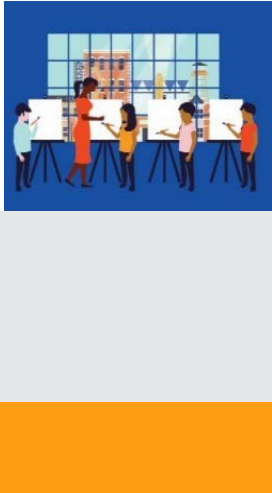




The National Endowment for the Arts is the only funder, public or private, that supports the arts in all **50 States** in the United States.

**In the past 5 years...** The National Endowment for the Arts distributed more than **\$3,408,200** in grants in **Mississippi**.



In one year alone...

- Arts and cultural production in Mississippi added **2.3%**, or **\$2.5 billion** to the state's economy.
- Mississippi's arts and cultural industries employ **25,817** workers. These workers earn wages and benefits totaling **\$1.2 billion**.
- **17.8%** of Mississippi's adults attended live music, theater, or dance performances, while **7.6%** attended art exhibits.

### National Endowment for the Arts Programs from FY16-FY18

The **Blue Star Museums** program provided free admission to thousands of active military personnel and their families at **28 participating museums** in Mississippi.

The **Poetry Out Loud** is a national competition which develops communication skills, presence, and confidence through the study, memorization, and public recitation of poetry. In Mississippi, over **10,300 students** participated from among **97** high schools.

The **Big Read** program generated **21** community events focused on reading outstanding American literature and involving more than **690** adults and students in Mississippi.

The **Shakespeare in American Communities** program enabled schools to offer children the opportunity to see free live professional performances of Shakespeare.

The **Creative Forces** program is expanding access to creative arts therapies and arts engagement opportunities for injured service members, veterans, and their families and caregivers.



### 2019 Agency Calendar of Events

**Blue Star Museums: Armed Forces Day (5/18) - Labor Day (9/2)**

**June Meeting of the National Council on the Arts: 6/19-6/21**

**National Book Festival: 8/31**

**National Heritage Fellows Awards & Concert: 9/18-9/20**

**October Meeting of the National Council on the Arts: 10/24-10/25**





NOTEWORTHY

**Examples of Schools & Organizations Receiving Past Endowment Support Include:**

**MS-1**

*Tupelo Film Commission*  
*Desoto Family Theatre*  
*Natchez Opera Festival*  
*Panola Playhouse*  
*Yocona International Folk Festival*  
*Holly Springs Main Street Chamber*  
*Midsouth Music Institute*  
*New Albany Main Street Association*

**MS-3**

*Brandon High School*  
*Greater Hellhave Neighborhood Association*  
*Mississippi's Children's Museum*  
*New Stage Theater*  
*The Temple Theatre*  
*Celtic Heritage Society*  
*Jackson Academy*  
*Starkville Area Arts Council*

**MS-2**

*BB King Museum*  
*Alcorn State University*  
*Grammy Museum*  
*Mississippi Water Valley High School*  
*Rock 'n Roll Museum*  
*Mississippi Puppetry Guild*  
*Sunflower River Blues Association*  
*Ballet Mississippi*

**MS-4**

*Walter Anderson Museum of Art*  
*Gulf Coast Messiah Chorus*  
*Gallery 782*  
*Lauren Rogers Museum of Art*  
*Public art Project of Ocean Springs*  
*Boys and Girls Club of the Gulf Coast*  
*Hattiesburg Arts Council*  
*University of Southern Mississippi*

**Your State Arts Agency: Mississippi Arts Commission**

Director: Malcolm White

Phone: 601-359-6030

