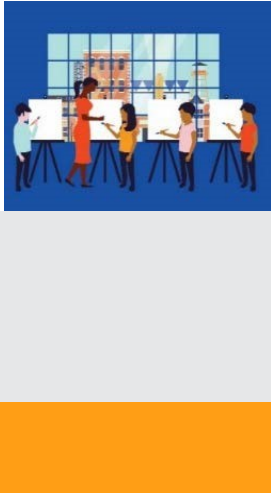




The National Endowment for the Arts is the only funder, public or private, that supports the arts in all **50 States** in the United States.

**In the past 5 years...** The National Endowment for the Arts distributed more than **\$4,279,500** in grants in **Montana**.



In one year alone...

- Arts and cultural production in Montana added **3.3%**, or **\$1.5 billion** to the state's economy.
- Montana's arts and cultural industries employ **15,663** workers. These workers earn wages and benefits totaling **\$0.8 billion**.
- **40.8%** of Montana's adults attended live music, theater, or dance performances, while **25.5%** attended art exhibits.

**National Endowment for the Arts Programs from FY16-FY18**

The **Blue Star Museums** program provided free admission to thousands of active military personnel and their families at **58 participating museums** in Montana.

The **Poetry Out Loud** is a national competition which develops communication skills, presence, and confidence through the study, memorization, and public recitation of poetry. In Montana, over **18,360 students** participated from among **232** high schools.

The **Big Read** program generated **333** community events focused on reading outstanding American literature and involving more than **10,570** adults and students in Montana.

The **Shakespeare in American Communities** program enabled schools in Montana to offer **33,000** children the opportunity to see free live professional performances of Shakespeare.

The **Creative Forces** program is expanding access to creative arts therapies and arts engagement opportunities for injured service members, veterans, and their families and caregivers.



**2019 Agency Calendar of Events**

**Blue Star Museums: Armed Forces Day (5/18) - Labor Day (9/2)**

**June Meeting of the National Council on the Arts: 6/19-6/21**

**National Book Festival: 8/31**

**National Heritage Fellows Awards & Concert: 9/18-9/20**

**October Meeting of the National Council on the Arts: 10/24-10/25**





NOTEWORTHY

**Examples of Schools & Organizations Receiving Past Endowment Support Include:**

- |   |  |
|---|--|
| <i>Alberta Bair Theater</i>                       | <i>Thompson Falls High School</i>                    |
| <i>Big Sky Film Institute</i>                     | <i>Young Men's Christian Association of Billings</i> |
| <i>Billings Family YMCA</i>                       | <i>Hamilton Players, Inc.</i>                        |
| <i>Cantlong Family Youth Home</i>                 | <i>Helena High School</i>                            |
| <i>Good Grief Camp</i>                            | <i>Bozeman Symphony Society</i>                      |
| <i>Judith Arts Society</i>                        | <i>Electric Peak Arts Council</i>                    |
| <i>Parents of Irving Children</i>                 | <i>Montana Ballet Company</i>                        |
| <i>Stumptown Art Studio</i>                       | <i>Glacier Symphony and Chorale</i>                  |
| <i>Verge Theater</i>                              | <i>Humanities Montana</i>                            |
| <i>World Museum of Mining Arts and Healthcare</i> | <i>Whitefish Theatre Co.</i>                         |
| <i>Bigfork High School</i>                        | <i>Yellowstone Art Museum</i>                        |
| <i>Bozeman Symphony Society</i>                   | <i>Tundra Club</i>                                   |
| <i>Children's Museum Missoula</i>                 | <i>Ravalli County Museum</i>                         |
| <i>High Line Heritage House Museum</i>            | <i>Valley Christian High School</i>                  |
| <i>MAGDA</i>                                      | <i>Waterworks Art Museum</i>                         |
| <i>Polson High School</i>                         | <i>Montana Tech Mineral Museum</i>                   |
|   | <i>Montana Arts</i>                                  |

**Your State Arts Agency: Montana Arts Council**

Director: Tatiana Gant

Phone: 406-444-6430

Email: [mac@mt.gov](mailto:mac@mt.gov)

