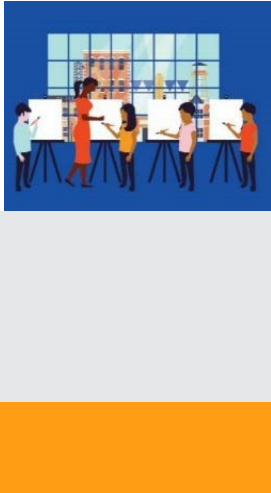




The National Endowment for the Arts is the only funder, public or private, that supports the arts in all **50 States** in the United States.

In the past 5 years... The National Endowment for the Arts distributed more than **\$5,436,500** in grants in **New Jersey**.



In one year alone...

- Arts and cultural production in New Jersey added **3.7%**, or **\$21.5 billion** to the state's economy.
- New Jersey's arts and cultural industries employ **135,712** workers. These workers earn wages and benefits totaling **\$11.3 billion**.
- **36.5%** of New Jersey's adults attended live music, theater, or dance performances, while **21.2%** attended art exhibits.

National Endowment for the Arts Programs from FY16-FY18

The **Blue Star Museums** program provided free admission to thousands of active military personnel and their families at **102 participating museums** in New Jersey.

The **Poetry Out Loud** is a national competition which develops communication skills, presence, and confidence through the study, memorization, and public recitation of poetry. In New Jersey, over **72,220 students** participated from among **476** high schools.

The **Big Read** program generated **292** community events focused on reading outstanding American literature and involving more than **24,810** adults and students in New Jersey.

The **Shakespeare in American Communities** program enabled schools in New Jersey to offer **29,500** children the opportunity to see free live professional performances of Shakespeare.

The **Creative Forces** program is expanding access to creative arts therapies and arts engagement opportunities for injured service members, veterans, and their families and caregivers.



2019 Agency Calendar of Events

Blue Star Museums: Armed Forces Day (5/18) - Labor Day (9/2)

June Meeting of the National Council on the Arts: 6/19-6/21

National Book Festival: 8/31

National Heritage Fellows Awards & Concert: 9/18-9/20

October Meeting of the National Council on the Arts: 10/24-10/25





NOTEWORTHY

Examples of Schools & Organizations Receiving Past Endowment Support Include:

NJ-1

*Rowan University
Camden High School
Symphony in C
Glassboro High School*

NJ-2

*Eagle Academy
Somers Point Historical Museum
Cumberland County College
Oakcrest High School*

NJ-3

*Doane Academy
Perkins Center for the Arts
Ocean County College
Barnegat High School*

NJ-4

*The Monmouth Museum
Count Basie Theatre
Two River Theater Company
Allentown High School*

NJ-5

*Ramsey High School
Blair Academy
Bergen County Community College
Peters Valley School of Craft*

NJ-6

*CoLAB Arts
Mater Dei Prep
The Write Stuff Writing
Workshop Colonia High School*

NJ-7

*Paper Mill Playhouse
The Pingry School
Westfield Historical Society
Cranford High School*

NJ-8

*Gotham Arts Exchange
Miftaahul Uloom Belleview
High School Kearny High
School*

NJ-9

*Arts Horizons
Cavankerry Press, Ltd.
Nai-Ni Chen Dance Company
Academy of Earth and Space Science*

NJ-10

*Jazz House Kids
Montclair Art Museum
Liberty Hall Museum
Newark Arts Council*

NJ-11

*Alexander Hamilton School
Morris Museum
MCPC Historic Speedwell
Stickley Museum at
Craftsman Farms*

NJ-12

*Old Barracks Museum
Rider University
Morven Museum and Garden*

Your State Arts Agency: New Jersey State Council On The Arts

Director: Allison Tratner

Phone: 609-292-6130

