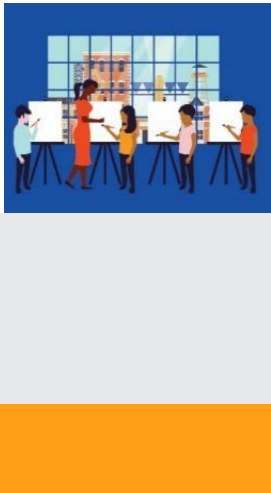




The National Endowment for the Arts is the only funder, public or private, that supports the arts in all **50 States** in the United States.

**In the past 5 years...** The National Endowment for the Arts distributed more than **\$4,402,100** in grants in **Oklahoma**.



In one year alone...

- Arts and cultural production in Oklahoma added **2.4%**, or **\$4.3 billion** to the state's economy.
- Oklahoma's arts and cultural industries employ **42,392** workers. These workers earn wages and benefits totaling **\$2.2 billion**.
- **22.7%** of Oklahoma's adults attended live music, theater, or dance performances, while **12.4%** attended art exhibits.

### National Endowment for the Arts Programs from FY16-FY1

The **Blue Star Museums** program provided free admission to thousands of active military personnel and their families at **127 participating museums** in Oklahoma.

The **Poetry Out Loud** is a national competition which develops communication skills, presence, and confidence through the study, memorization, and public recitation of poetry. In Oklahoma, over **7,540 students** participated from among **48** high schools.

The **Big Read** program generated **78** community events focused on reading outstanding American literature and involving more than **13,230** adults and students in Oklahoma.

The **Shakespeare in American Communities** program enabled schools to offer children the opportunity to see free live professional performances of Shakespeare.

The **Creative Forces** program is expanding access to creative arts therapies and arts engagement opportunities for injured service members, veterans, and their families and caregivers.



### 2019 Agency Calendar of Events

**Blue Star Museums: Armed Forces Day (5/18) - Labor Day (9/2)**

**June Meeting of the National Council on the Arts: 6/19-6/21**

**National Book Festival: 8/31**

**National Heritage Fellows Awards & Concert: 9/18-9/20**

**October Meeting of the National Council on the Arts: 10/24-10/25**





NOTEWORTHY

## Examples of Schools & Organizations Receiving Past Endowment Support Include:

### OK-1

*Arts and Humanities Council of Tulsa*  
*Broken Arrow Community Playhouse*  
*Military History Center*  
*Children's Musical Theatre of Bartlesville*  
*Tulsa Opera*  
*Woody Guthrie Center*

### OK-2

*Cherokee Nation*  
*Oklahoma Shakespearean Festival*  
*City of Durant*  
*Har-Ber Village Museum*  
*John Ross Museum*  
*Muskogee War Memorial Park*

### OK-3

*Guthrie Art Escape*  
*City of Stillwater*  
*Kaw Nation*  
*Gaslight Theatre*  
*Woodward Arts Council*  
*Shattuck High School*

### OK-4

*Ada High School*  
*Duncan Little Theatre*  
*Jazz in June*  
*Rose State College*  
*Pioneer Library System Foundation*  
*Norman Arts Council*  
*Walters High School*

### OK-5

*American Banjo Museum*  
*Fine Arts Institute of Edmond*  
*Tequila Azul*  
*Oklahoma Israel Exchange*  
*Seminole Nation Museum*  
*New Lima High School*  
*Mabee-Gerrer Museum of Art*

## Your State Arts Agency: Oklahoma Arts Council

Director: Amber Sharples  
 Phone: 405-521-2931 Email:  
 okarts@arts.ok.gov

