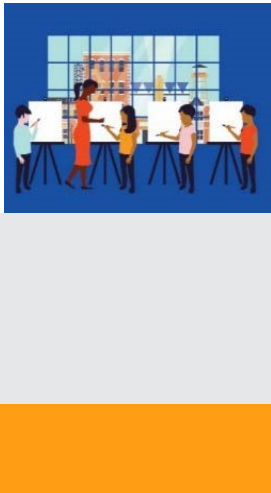




The National Endowment for the Arts is the only funder, public or private, that supports the arts in all **50 States** in the United States.

## In the past 5 years...

The National Endowment for the Arts distributed more than **\$12,482,500** in grants in **Pennsylvania**.



### In one year alone...

- Arts and cultural production in Pennsylvania added **3.3%**, or **\$24.0 billion** to the state's economy.
- Pennsylvania's arts and cultural industries employ **175,572** workers. These workers earn wages and benefits totaling **\$11.2 billion**.
- **34.0%** of Pennsylvania's adults attended live music, theater, or dance performances, while **17.9%** attended art exhibits.

### National Endowment for the Arts Programs from FY16-FY18

The **Blue Star Museums** program provided free admission to thousands of active military personnel and their families at **300 participating museums** in Pennsylvania.

The **Poetry Out Loud** is a national competition which develops communication skills, presence, and confidence through the study, memorization, and public recitation of poetry. In Pennsylvania, over **19,710 students** participated from among **341** high schools.

The **Big Read** program generated **151** community events focused on reading outstanding American literature and involving more than **6,810** adults and students in Pennsylvania.

The **Shakespeare in American Communities** program enabled schools in Pennsylvania to offer **46,500** children the opportunity to see free live professional performances of Shakespeare.

The **Creative Forces** program is expanding access to creative arts therapies and arts engagement opportunities for injured service members, veterans, and their families and caregivers.



### 2019 Agency Calendar of Events

**Blue Star Museums: Armed Forces Day (5/18) - Labor Day (9/2)**

**June Meeting of the National Council on the Arts: 6/19-6/21**

**National Book Festival: 8/31**

**National Heritage Fellows Awards & Concert: 9/18-9/20**

**October Meeting of the National Council on the Arts: 10/24-10/25**





**NOTEWORTHY**

**Examples of Schools & Organizations Receiving Past Endowment Support Include:**

**PA-1**

*National Liberty Museum  
Leah Stein Dance Company*

**PA-7**

*Sanderson Museum  
Newlin Grist Mill*

**PA-13**

*Phil-Mont Christian Academy  
Opera North*

**PA-2**

*Philadelphia Singers  
Woodmere Art Museum*

**PA-8**

*Greystone Academy  
Fonthill Castle*

**PA-14**

*Asian Americans United  
Andy Warhol Museum*

**PA-3**

*Erie Maritime Museum  
Mercyhurst University*

**PA-9**

*Altoona Symphony  
Mercersburg Academy*

**PA-15**

*Hershey Medical Center  
Touchstone Theatre*

**PA-4**

*PA National Fire Museum  
Gettysburg High School*

**PA-10**

*Keystone Academy  
Paragon Ragtime Symphony*

**PA-16**

*Lancaster Catholic High School  
Warwick High School*

**PA-5**

*Palmer Institute of Art  
Drake Well Museum & Park*

**PA-11**

*Shippensburg Historical Society  
Covenant Christian Academy*

**PA-17**

*Holy Cross High School  
Scranton Shakespeare Festival*

**PA-6**

*National Audubon Society  
Cedar Crest High School*

**PA-12**

*Avonworth High School  
Sweetwater Arts Center*

**PA-18**

*Greensburg Art Club  
Robert Morris University*

**Your State Arts Agency: Pennsylvania Council On The Arts**

Director: Karl Blischke

Phone: 717-787-6883

