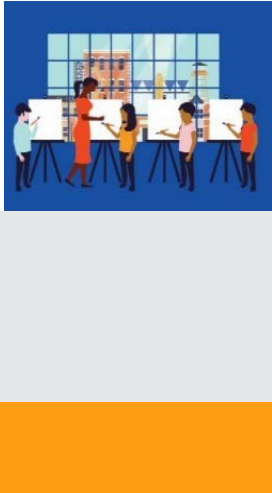




The National Endowment for the Arts is the only funder, public or private, that supports the arts in all **50 States** in the United States.

In the past 5 years... The National Endowment for the Arts distributed more than **\$3,780,000** in grants in **Rhode Island**.



In one year alone...

- Arts and cultural production in Rhode Island added **3.3%**, or **\$1.9 billion** to the state's economy.
- Rhode Island's arts and cultural industries employ **17,750** workers. These workers earn wages and benefits totaling **\$1.1 billion**.
- **40.1%** of Rhode Island's adults attended live music, theater, or dance performances, while **18.6%** attended art exhibits.

National Endowment for the Arts Programs from FY16-FY18

The **Blue Star Museums** program provided free admission to thousands of active military personnel and their families at **54 participating museums** in Rhode Island.

The **Poetry Out Loud** is a national competition which develops communication skills, presence, and confidence through the study, memorization, and public recitation of poetry. In Rhode Island, over **7,720 students** participated from among **46** high schools.

The **Big Read** program generated dynamic community reading programs, each designed around outstanding American literature.

The **Shakespeare in American Communities** program enabled schools in Rhode Island to offer **14,300** children the opportunity to see free live professional performances of Shakespeare.

The **Creative Forces** program is expanding access to creative arts therapies and arts engagement opportunities for injured service members, veterans, and their families and caregivers.



2019 Agency Calendar of Events

Blue Star Museums: Armed Forces Day (5/18) - Labor Day (9/2)

June Meeting of the National Council on the Arts: 6/19-6/21

National Book Festival: 8/31

National Heritage Fellows Awards & Concert: 9/18-9/20

October Meeting of the National Council on the Arts: 10/24-10/25





NOTEWORTHY

Examples of Schools & Organizations Receiving Past Endowment Support Include:

RI-1

- Boys and Girls Club of Newport County*
- Edgewood Highland School*
- Common Fence Music*
- Lippitt House Museum*
- Mose Brown School*
- Old Slater Mill Association*
- Warren Preservation Society*
- Paul Cuffee School*
- Jamestown Arts Center*
- Rhode Island Black Storytellers*
- F.J. Varieur Elementary School*
- Stadium Theatre Foundation*
- International Tennis Hall of Fame*
- Jewish Seniors Agency of Rhode Island*
- Fort Barton School*
- Progreso Latino*

RI-2

- Block Island Poetry Project*
- Cedar Hill School*
- Dance Alliance of Rhode Island*
- Hope Elementary School*
- Latino Public Radio*
- Ocean State Theatre Company*
- St. Patrick's Parish*
- Clouds Hill Victorian House Museum*
- Father Holland Catholic School*
- Quidnessett Elementary School*
- Girls Rock! Rhode Island*
- Chorus of Westerly*
- Environmental Council of Rhode Island*
- Puerto Rican Institute for Arts and Advocacy*
- South County Museum*
- Trinity Academy for the Performing Arts*

Your State Arts Agency: Rhode Island State Council On The Arts

Director: Randall Rosenbaum

Phone: 401-222-3880

Email: Donna.Fiske@arts.ri.gov

