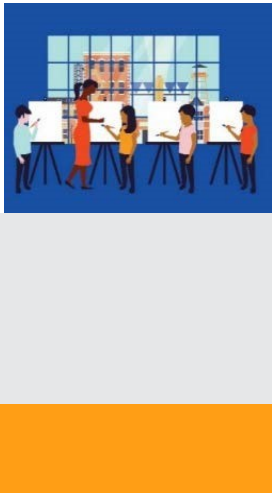




The National Endowment for the Arts is the only funder, public or private, that supports the arts in all **50 States** in the United States.

In the past 5 years... The National Endowment for the Arts distributed more than **\$11,050,200** in grants in **Washington**.



In one year alone...

- Arts and cultural production in Washington added **8.3%**, or **\$41.1 billion** to the state's economy.
- Washington's arts and cultural industries employ **177,527** workers. These workers earn wages and benefits totaling **\$20.9 billion**.
- **38.7%** of Washington's adults attended live music, theater, or dance performances, while **22.2%** attended art exhibits.

National Endowment for the Arts Programs from FY16-FY18

The **Blue Star Museums** program provided free admission to thousands of active military personnel and their families at **132 participating museums** in Washington.

The **Poetry Out Loud** is a national competition which develops communication skills, presence, and confidence through the study, memorization, and public recitation of poetry. In Washington, over **61,410 students** participated from among **198** high schools.

The **Big Read** program generated **75** community events focused on reading outstanding American literature and involving more than **3,480** adults and students in Washington.

The **Shakespeare in American Communities** program enabled schools in Washington to offer **35,300** children the opportunity to see free live professional performances of Shakespeare.

The **Creative Forces** program is expanding access to creative arts therapies and arts engagement opportunities for injured service members, veterans, and their families and caregivers. Joint Base Lewis-McChord is participating in this innovative program.



2019 Agency Calendar of Events

Blue Star Museums: Armed Forces Day (5/18) - Labor Day (9/2)

June Meeting of the National Council on the Arts: 6/19-6/21

National Book Festival: 8/31

National Heritage Fellows Awards & Concert: 9/18-9/20

October Meeting of the National Council on the Arts: 10/24-10/25





NOTEWORTHY

Examples of Schools & Organizations Receiving Past Endowment Support Include:

WA-1

*Kirkland Arts Center
Meta Performing Arts
Celtic Arts Foundation
Windward High School
Darrington High School*

WA-5

*Fort Walla Walla Museum
Spokane Arts Festival
Mead High School
The Oaks Classical Christian Academy
Spokane County Library District*

WA-9

*Museum of Flight
Pratt Fine Arts Center
Richard Hugh House
Youth in Focus
City of Kent*

WA-2

*The Whale Museum
Penn Cove Water Festival
Stanwood High School
Pickford Film Festival
Anacortes High School*

WA-6

*Tacoma Art Museum
Harbor History Museum
South Sitkap School District
Polson Museum
Children's Museum of Tacoma*

WA-10

*Rainier High School
Ballet Northwest
Evergreen State College
Avanti High School
Life Christian Academy*

WA-3

*Fire Mountain Arts Council
Trout Lake School
Maryhill Museum of Art
Water Music Festival Society
Vancouver Symphony Orchestra*

WA-7

*Henry Art Gallery
Pilchuck Glass School
Nordic Heritage Museum
Washon Island High School
Arab Center of Washington*

WA-4

*Liberty Bell High School
Methow Arts Alliance
AC Davis High School
Franklin County Historical Society
Shafer Historical Museum*

WA-4

*Kentwood High School
Vedic Cultural Center
Gallery One Visual Arts Center
Polish Home Foundation
Village Theater*

Your State Arts Agency: Washington State Arts Commission

Director: Karen Hanan

Phone: 360-753-3860

Email: info@arts.wa.gov

