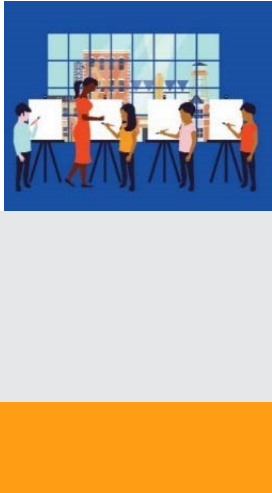




The National Endowment for the Arts is the only funder, public or private, that supports the arts in all **50 States** in the United States.

In the past 5 years... The National Endowment for the Arts distributed more than **\$5,393,200** in grants in **Wisconsin**.



In one year alone...

- Arts and cultural production in Wisconsin added **3.1%**, or **\$9.7 billion** to the state's economy.
- Wisconsin's arts and cultural industries employ **94,167** workers. These workers earn wages and benefits totaling **\$5.6 billion**.
- **36.2%** of Wisconsin's adults attended live music, theater, or dance performances, while **18.6%** attended art exhibits.

National Endowment for the Arts Programs from FY16-FY18

The **Blue Star Museums** program provided free admission to thousands of active military personnel and their families at **195 participating museums** in Wisconsin.

The **Poetry Out Loud** is a national competition which develops communication skills, presence, and confidence through the study, memorization, and public recitation of poetry. In Wisconsin, over **4,620 students** participated from among **50** high schools.

The **Big Read** program generated **708** community events focused on reading outstanding American literature and involving more than **44,540** adults and students in Wisconsin.

The **Shakespeare in American Communities** program enabled schools in Wisconsin to offer **35,400** children the opportunity to see free live professional performances of Shakespeare.

The **Creative Forces** program is expanding access to creative arts therapies and arts engagement opportunities for injured service members, veterans, and their families and caregivers.



2019 Agency Calendar of Events

Blue Star Museums: Armed Forces Day (5/18) - Labor Day (9/2)

June Meeting of the National Council on the Arts: 6/19-6/21

National Book Festival: 8/31

National Heritage Fellows Awards & Concert: 9/18-9/20

October Meeting of the National Council on the Arts: 10/24-10/25





NOTEWORTHY

Examples of Schools & Organizations Receiving Past Endowment Support Include:

WI-1

Kenosha Public Library
Civil War Museum
Boys and Girls Club of Kenosha
Janesville Concert Association

WI-2

Indian Music Circle of Wisconsin
Madison Opera
Pendarvis Historical Society
Wisconsin Historical Museum

WI-3

Eau Claire Chamber Orchestra
La Crosse Community Theatre
Dunn County Historical Society
Central Wisconsin Children's Museum

WI-4

Milwaukee Ballet Company
Pabst Mansion
Florentine Opera Company
Jewish Museum Milwaukee

WI-5

Sunset Playhouse
Donna Lexa Community Art Center
Lake Mills Main Street Program
Arrowhead Union High School

WI-6

Oshkosh Public Museum
Silver Lake College of the Holy Family
Sheboygan County Historical Museum
Lynden Sculpture Garden

WI-7

Luke Area Historical Society
Chetek Area Museum
Tribe of Chippewa Indians
Red Cedar Symphony

WI-8

Paper Discovery Center
National Railroad Museum
Green Bay Symphony Orchestra
Oneida Nation Arts Program

Your State Arts Agency: **Wisconsin Arts Board**

Director: George Tzougros

Phone: 608-266-0190

Email: artsboard@wisconsin.gov

