

---

# 2017 Research: Art Works

## *How to apply*

**Application deadline: October 11, 2016**

---

Sunil Iyengar, Director of Research & Analysis

Melissa Menzer, Program Analyst

Patricia Germann, Research Specialist

Webinar date: September 7, 2016



National  
Endowment  
for the Arts  
arts.gov

# Agenda

---

1. Overview of Research: Art Works Program
2. What's New in FY17
3. Application Process and Eligibility
4. Application Tips and FAQs
5. Questions

# Our Mission

---

The National Endowment for the Arts is a public agency dedicated to strengthening the creative capacity of our communities by providing all Americans with diverse opportunities for arts participation. The NEA awards grants to arts organizations of all sizes across all 50 states and 6 U.S. territories.

# NEA Office of Research & Analysis

---

We conduct and support research on the value and impact of the arts.

## Overarching research questions

- What are the **underlying conditions and vehicles** for arts participation?
- What are the **direct and/or indirect benefits** of the arts for **individuals** and/or **communities**?

# *Research: Art Works*

---



The Research: Art Works grant program aims to promote public knowledge and understanding about the contributions of the arts by expanding and promoting evidence of the value and/or impact of the arts

# Grantee Research Fields

---



# Arts Disciplines

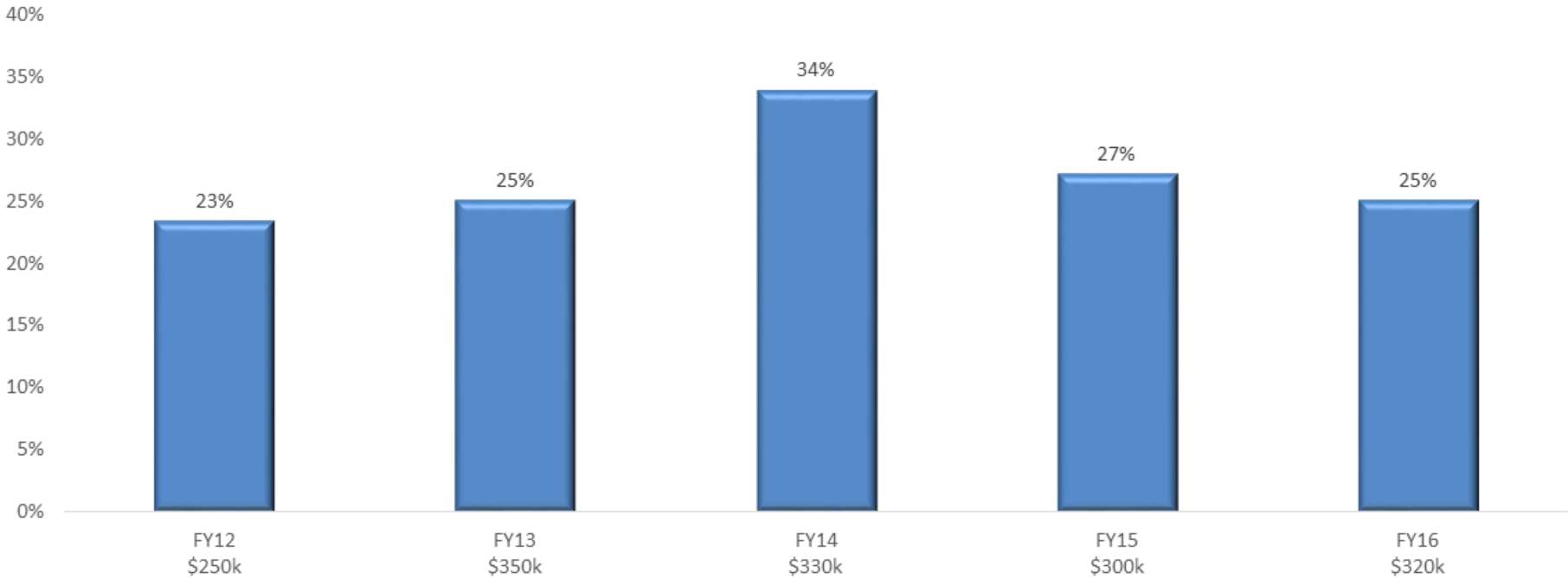
---

- ✓ **Performing Arts**  
*Music, Opera, Dance, Theater & Musical Theater*
- ✓ **Visual Arts**  
*Museums, Design, Media Arts, Visual Arts*
- ✓ **Multidisciplinary**  
*Artist Communities, Folk & Traditional Arts, Presenting & Multidisciplinary Works*
- ✓ **Literature**
- ✓ **Arts Education**



# Applicant Success Rate

Research: Art Works grant program history





# **What's new in FY17**

FY17 Research: Art Works Guidelines | Section 2

# New in FY17: Two Grant Tracks

---

- **Track 1: Value and Impact**

*Matching grant range: \$10,000-\$30,000*

Projects will examine the value and/or impact of the arts in any topic area(s) by using data and any methods appropriate to the proposed research questions.

- **Track 2: Experimental & Quasi-experimental Designs**

*Matching grant range: \$30,000-\$100,000*

Projects test causal or inferred-causal impact of the arts on individual or cohort outcomes using primarily experimental or quasi-experimental design methods.

# Other Changes in FY17

- Novelty is now part of the review criteria
- Updated sample narratives: [arts.gov/foia/reading-room](https://www.arts.gov/foia/reading-room)



# **FY17 Applications**

## **Eligibility and Application Process**

FY17 Research: Art Works Guidelines | Section 3

# Applicant Eligibility

---

Eligible **APPLICANT ORGANIZATIONS** are:

- Nonprofit, tax-exempt 501(c)(3) organizations,
- Units of state or local government, or
- Federally recognized tribal communities or tribes.
- This may include, but is not limited to, colleges and universities.

Eligible **APPLICANT ORGANIZATIONS** have:

- **3+ years** of operating history prior to application deadline
- Met all reporting requirement on any previous NEA awards

# Application Limitations

---

- An organization as a lead applicant **may submit more than one application** under these guidelines. In each case, the request must be for a **distinctly different project**.
- A partnering organization may serve as a partner on as many applications as they like.

# Application Limitations (continued)

---

- An application in response to this announcement **does not** preclude an organization from applying under other Arts Endowment funding opportunities, including Art Works. In each case, the request must be for a **distinctly different project**.

# Funding Limitations

---

We do not fund:

- Projects where **the arts are *not* central to the research project**
- Activities ***not* directly linked to the research project**
- General operating support (i.e. recurring projects)
- Construction, purchase, or renovation of facilities
- Home offices



# Funding Limitations (continued)

---

## We do not fund:

- Costs to bring a project into compliance with federal grant requirements
- Sub-granting or re-granting (except for local arts agencies)
- Financial awards to winners of competitions
- Certain fundraising or financing activities

# Selecting a Grant Track: Track 2

---

- ✓ Primary method involves **experimental** or **quasi-experimental** design
- ✓ Involves both an **intervention** and a **comparison group**
  - Random assignment (experimental) versus non-random assignment (quasi-experimental)

# Examples: Previous Awards

---

## ***George Mason University (Funded FY14; \$25,000)***

To support a **randomized, waitlist-controlled trial** examining the effects of visual arts, music, and dance therapy on the emotional and cognitive functioning of older adults. The study will occur in a long-term care facility housing low-income, older adults from diverse racial and ethnic backgrounds. Trained facilitators will engage older adults in a music, imagery, and movement (MiM) intervention, or, alternatively, in social group interaction. The study will include surveys and observational and clinical assessments, focus groups, and structured interviews, along with pre- and post-therapy measurements.

## ***West Chester University of Pennsylvania (Funded FY13; \$25,000)***

To support a study examining the physiological impacts of music, dance, and visual arts participation on economically disadvantaged children. More specifically, the study will examine the relationship between levels of the stress hormone cortisol and arts engagement among Head Start preschool students.

# Selecting Your Track: Project Type

---

- Primary data collection and data analysis
- Secondary data analysis
- Quantitative studies
- Qualitative studies
- Mixed-method studies
- Psychological studies
- Economic impact studies
- Statistically-Driven Meta-analyses
- Program evaluations
- Translational research

# Examples: Previous Awards

---

## ***Duke University (Funded FY16; \$18,000)***

To support a nationwide evaluation of the organizational characteristics and social networks of El Sistema USA (ESUSA) orchestral training programs. ESUSA programs offer after-school music instruction to historically underserved populations. Duke will work with ESUSA program members to analyze each program's website, to survey and interview key program staff, and to create visual representations of the social networks enabled by each program.

## ***Indiana University-Purdue University Indianapolis (Funded FY15; \$15,000)***

To support a study of artists' employment patterns relative to prior decades and how artists found new markets during and after the recent recession. Researchers will construct a longitudinal study sample from data in the Census Bureau's Current Population Survey, and will also conduct "web scrapes" from the crowdfunding sites like Kickstarter and Indiegogo, partly to understand variations in fundraising outcomes of arts projects compared with technology and non-arts projects.

# Examples: Previous Awards

---

## ***Ohio State University (Funded FY15; \$15,000)***

To support a meta-analysis on the effects of drama-based pedagogies on literacy-related student outcomes. The study focuses on empirical research literature published from 1985 through the present. Literacy-related outcome areas of interest include achievement (writing and reading), and psychological, social, and behavioral student outcomes in educational settings. The meta-analysis will include published and non-published, and experimental and quasi-experimental, studies involving school-aged children, adolescents, and college students.

## ***Sundance Institute (Funded FY13; \$20,000)***

To support a study to determine the extent of racial/ethnic minority representation among content creators who work in independent film. The study will examine barriers encountered throughout their careers and will assess whether behind-the-camera diversity translates to greater diversity in front of the camera (i.e., in casting or subject matter).

# NEA Grants Search Tool

---

Descriptions of all previously funded Research: Art Works grants are available using the NEA's Grant Search tool:

**[apps.nea.gov/grantsearch/](https://apps.nea.gov/grantsearch/)**

# Application Process

---





# Application Process: Important Dates

---

Oct 11, 2016: Grants.gov submission deadline

Oct 18-25, 2016: NEA-GO application is open

April 2017: Award notification

May 1, 2017: Earliest project start date

*Note that application deadlines, award notification, and project start dates are the same for both Track 1 and Track 2 projects.*

# How to Apply: Step 1 of 2

---

Submit the SF-424 through Grants.gov

- Only item submitted through Grants.gov
- If not successfully submitted by the deadline, you'll be unable to complete Step 2.

# How to Apply: Step 1 of 2 (continued)

APPLICATION FOR FEDERAL DOMESTIC ASSISTANCE - Short Organizational	
* 1. NAME OF FEDERAL AGENCY:	
2. CATALOG OF FEDERAL DOMESTIC ASSISTANCE NUMBER:	
CFDA TITLE:	
* 3. DATE RECEIVED: SYSTEM USE ONLY	
* 4. FUNDING OPPORTUNITY NUMBER:	
* TITLE:	
5. APPLICANT INFORMATION	
* a. Legal Name:	
b. Address:	
* Street1:	Street2:
* City:	County/Parish:
* State:	Province:
* Country:	* Zip/Postal Code:
c. Web Address:	
http://	
* d. Type of Applicant: Select Applicant Type Code(s):	* e. Employer/Taxpayer Identification Number (EIN/TIN):
Type of Applicant:	* f. Organizational DUNS:
Type of Applicant:	* g. Congressional District of Applicant:
* Other (specify):	
6. PROJECT INFORMATION	
* a. Project Title:	

SF-424

# How to Apply: Step 1 of 2 (continued)

---

- Obtain a **DUNS** number and **register with SAM** (System for Award Management) in order to use Grants.gov—allow at least 2 weeks for registration or renewal
- Registration is free
- You are required to change your Grants.gov password every **60 days**
- **Don't wait until immediately before the deadline**; submit your SF-424 no later than 10 days prior to the deadline
- See **www.grants.gov** for more details or call 1-800-518-4726

# How to Apply: Step 2 of 2

---

- Prepare GAF materials well in advance of the application deadline
- Have GAF materials ready to upload once NEA-GO opens on October 18<sup>th</sup>
- A sample GAF and a list of the items you will upload are available on our website now

# How to Apply: Step 2 of 2 (continued)

---

Access NEA-GO through the link published in the application guidelines at arts.gov

- User Name = Grants.gov Tracking Number (**Example: GRANT12345678**)  
⇒ *Your user name is assigned when you submit your SF-424*
- Password = NEA Application Number (**Example: 14-123456**)  
⇒ *Find this information at **CHECK MY APPLICATION** on Grants.gov.*  
⇒ *Available 2 days after you submit your SF-424 to Grants.gov (but no earlier than 10 days before the application deadline)*

# How to Apply: Step 2 of 2 (cont.)

---

Log on to NEA-GO and submit the substantial part of your application materials through the **Grant Application Form (GAF)**

Include: Answers to narrative questions, biographies of key project personnel, financial info, and other special items

# Application Review Panel

---

Applications are reviewed by a panel from diverse fields of expertise including:

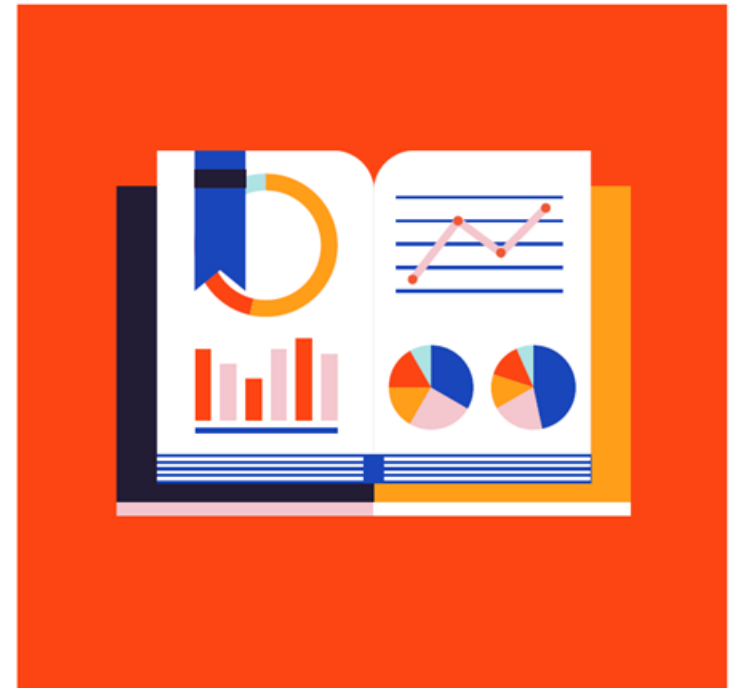
- Arts Management and Philanthropy
- Economics
- Education
- Medicine and Health
- Psychology
- Sociology
- Statistics and Research Methods
- Urban and Regional Planning



# Review Criteria

ARTISTIC EXCELLENCE

- Is the research plan **clear**?
- Is there an **evidence base** for the research plan?
- Is there **novelty** within the research plan?
- Are the organization, its partners, and project personnel **qualified** to execute the research plan?



# Review Criteria

ARTISTIC MERIT



- Does the project have a potential to **elevate** the public profile of arts-related research?
- Does the project include effective strategies to document **progress and success** during the period of performance?
- Does the project include effective strategies to **document and disseminate** the project results, products, and data?
- Have the organization and partners devoted adequate **resources** to execute this particular project?

# **Application Tips & FAQs**

FY17 Research: Art Works Guidelines | Section 4

# Application Tips

---

While all panelists will have research experience and expertise, they may not be from your **specific** research topic area or methodology area.

- Include definitions of research topics and descriptions of methods clearly, and include references to appropriate research and/or theory that your work builds on, if such extant work is available.
- Follow the GAF instructions on how to organize your project narrative
- Be clear about who is doing what on the project

# Application Tips: Project Budget

---

- Range of NEA grant request:
  - Track 1: \$10,000-\$30,000 grants
  - Track 2: \$30,000-\$100,000 grants
- Matching funds
- Indirect costs
- Project expenses: must equal project income

# Additional Resources

More information is available online at arts.gov

Home » Grants » Apply for a Grant » Grants for Organizations

## GRANTS

### Research: Art Works

The National Endowment for the Arts' Office of Research & Analysis makes awards to support research that investigates the value and/or impact of the arts, either as individual components of the U.S. arts ecology or as they interact with each other and/or with other domains of American life.

In past years, the Research: Art Works category has invited researchers to propose studies that examine topics related to any area(s) on the *How Art Works* system map (see Grant Program Description). These projects have used quantitative, qualitative, or mixed-methods approaches, and have relied on primary and/or secondary data for analysis. Examples of previously funded research can be found via the "Grant Search" engine or by viewing [Research: Art Works Grants Final Papers](#).

This year, Research: Art Works offers support for projects in two areas:

- **Track One: Value and Impact.** These research projects aim to examine the value and/or impact of the arts in any topic area(s) by using data and methods appropriate to the proposed research questions. Matching grants range from \$10,000-\$30,000.
  - Projects relying primarily on experimental/quasi-experimental design methods are **not** eligible under this Track and should apply to Track Two.
- **Track Two: Experimental and Quasi-Experimental Designs.** These research projects aim to test the causal or inferred-causal impact of the arts on individual or cohort outcomes by using experimental or quasi-experimental design methods appropriate to the proposed research questions. Matching grants range from \$30,000-\$100,000.
  - This Track is **only** for projects relying primarily on experimental or quasi-experimental research methods.

NOTE: Applications **will not** be transferred from one Track to the other after the deadline.

By providing financial support to deserving projects, this program will spur growth in the number of people—across diverse fields of inquiry—who are experienced in and knowledgeable about arts-related research. This program also seeks to heighten the relevance and significance of arts-related research to policy and practice.

If you have questions, please contact the staff at [nearesearchgrants@arts.gov](mailto:nearesearchgrants@arts.gov)



### TO APPLY

- [Application Calendar](#)
- [Grant Program Description](#)
- [Award Information](#)
- [Applicant Eligibility](#)
- [How to Apply](#)
  - [How to Prepare and Submit an Application](#)
  - [Step 1: Submit the SF-424 to Grants.gov](#)
  - [Step 2: Submit Materials Through NEA-GO](#)
- [Other Requirements and Priorities](#)
- [Application Review](#)
- [Award Administration](#)
- [Contacts: nearesearchgrants@arts.gov](mailto:nearesearchgrants@arts.gov)
- [Other Information](#)
- [FAQs](#)

### APPLICANT RESOURCES

- [Guidelines Webinar](#)
- [Online Tutorial: Using the Grant Application Form \(GAF\)](#)
- [Sample Application Narratives](#)
- [Art Works Blog: Tips for Applicants \(coming soon\)](#)
- [Research: Art Works Final Papers](#)
- [Publicly Available Data Sources](#)

# Questions

FY17 Research: Art Works Guidelines | Section 5



**National  
Endowment  
for the Arts**  
arts.gov

Email: **nearesearchgrants@arts.gov**

FY17 guidelines and additional resources:  
**<https://www.arts.gov/grants-organizations/research-art-works>**